

Design of Cities
The Bauhaus

Instructor
Donald J. Poland, MS, AICP

Design of Cities

The Bauhaus

- The Bauhaus emerges out of the industrialization of Germany.
- Behrens's accepted of industrialization as Germany's destiny. He built "a temple to industrial power" while bringing to the workers a sense of common purpose that was lost when they moved from the farm to the city (Frampton 111-12).

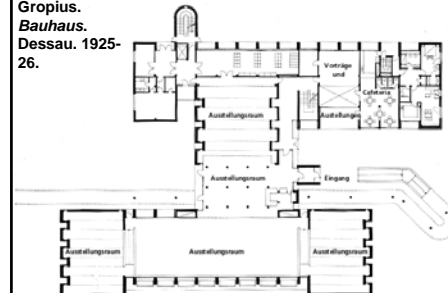


Design of Cities
The Bauhaus

- The ultimate, if distant, aim of the Bauhaus is the unified work of art – the great structure – in which there is no distinction between monumental and decorative art. –Gropius
- The Bauhaus was founded with the visions of erecting the cathedral of socialism and the workshops were established in the manner of the cathedral building lodges.
- The artist was no longer "above" the craftsman, but both were equals.



Gropius.
Bauhaus.
Dessau. 1925-26.



Finally, by joining all the planes firmly into boxes and interlocking their separate volumes into an asymmetrical composition like the continuous mechanical movement of a set of gears, Gropius's Bauhaus emerges.

Design of Cities

The Bauhaus



5

Design of Cities

The Bauhaus

- In 1922, Gropius changed the focus of the school from craft to the understanding of industrial methods of production.
- The classrooms/ administration offices were built on one side of the road, while the studios were across the street.
- These two volumes were connected by the bridge where the professors had their offices.
- The teachers had mastered both the intellectual and technical knowledge needed to produce artistically designed, economical goods.

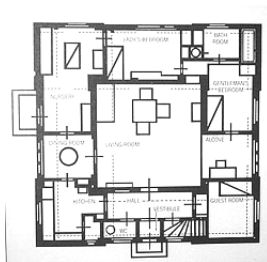
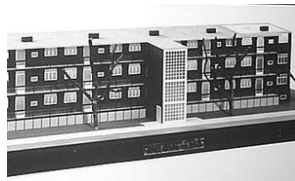


6

Design of Cities

The Bauhaus

- The Bauhaus was a socially orientated program.
 - "An artist must be conscious of his social responsibility to the community. On the other hand the community has to accept the artist and support him."
- Gropius' interest was to industrialize the building process for low cost housing. In the Bauhaus Exhibition of 1923, he and Adolf Meyer introduced prefabricated housing units to address Germany's growing housing crisis.
- Georg Muche introduced *Haus am Horn* that has no servants' rooms, corridors, or staircases. It consists of seven small rooms and a living room in the middle.
 - It reflects the socialist ideals held by the majority of the faculty.



7

Design of Cities

The Bauhaus

- 1933 - Police search the Bauhaus on the orders of the Dessau district attorney's office, 32 students are detained and an application made for the closure of the Bauhaus.
- Mies van der Rohe dissolves the Bauhaus at the start of the summer semester with the masters' consent.
- After the school's closing in 1933, many of its artists moved to the United States.
- The New Bauhaus, founded in 1937 in Chicago by Maholy-Nagy, was the immediate successor to the Bauhaus. The complete curriculum developed by Walter Gropius was adopted and further developed, aiming at the education of the widely oriented universal designer.
- The methods which came from the German Bauhaus were adopted in manifold modified form by other American schools.



8

Design of Cities

The Bauhaus

Laszlo Maholy-Nagy



Mies van der Rohe



9

Design of Cities

The Bauhaus



10

Design of Cities

The Bauhaus



Josef Albers, Hinnerk Scheper, Georg Muche, Lászlo Moholy-Nagy, Herbert Bayer, Joost Schmidt, Walter Gropius, Marcel Breuer, Vassily Kandinsky, Paul Klee, Lyonel Feininger, Gunta Stolzl and Oskar Schlemmer.

11

Design of Cities

America and the International Style

- While the Bauhaus was still active in Europe, America was introduced to The Bauhaus as the International Style.



12