



Connecticut State Data Center (CtSDC)

Population Projections 2005 to 2030

Presentation to
Connecticut Partnership For Balanced Growth
April 3rd, 2008

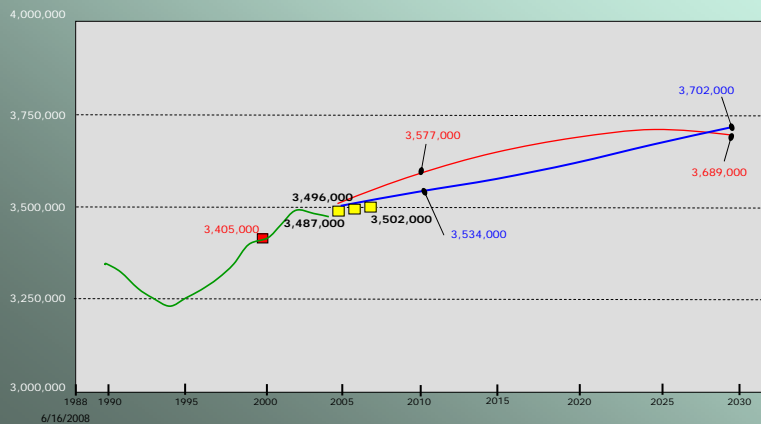
Orlando Rodriguez
Manager/Demographer
CtSDC



CT Population Projections 2005 to 2030

Long-Term Historical Data Suggests Continued Low Growth

- 2000 Decennial Census Population ■
- 1991 to 2005 Population Trend from IRS Data —
- Census Projections —
- CtSDC Projections —
- 2005, 2006, 2007 Census Estimates ■

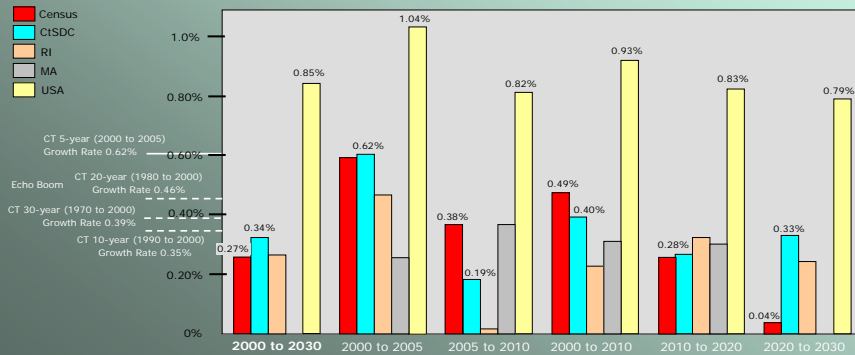




Comparison of Projected Growth Rates

CT Growth Rates 2000-2005 Were Historical Highs

- CT 2000-2005 growth rate of 0.62% (0.0062) was a 30-year high
- CtSDC projected 2000-2010 rate is near 30-year rate of 0.39% (0.0039)
- CtSDC projected 2000-2030 rate is higher than Census but within long-term historical rates for CT



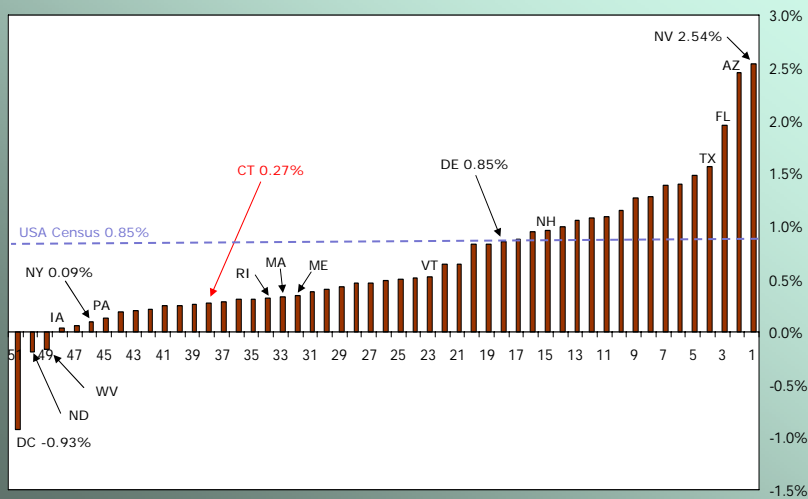
6/16/2008

3



Census Projected Yearly Growth Rates for States 2000 to 2030

- Projected yearly growth rate of **0.27%** ranks CT 38th (from highest rate)



6/16/2008

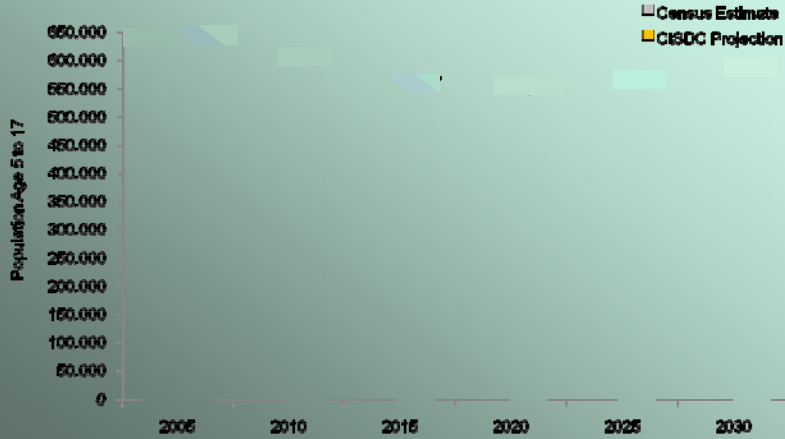
4



Projected K-12 Population (Public & Private) 2005 to 2030

Drop of Approximately 65,000 From 2005 to 2030

- 2006 to 2007: CT Public School Enrollment Dropped by Approximately 4,000 (preliminary)
- 2006 to 2007: 67% of Districts Had No Change in Enrollment or Dropped in Enrollment
- 2020: K-12 Low Point at 100,000 Below 2005 Population



6/16/2008

5



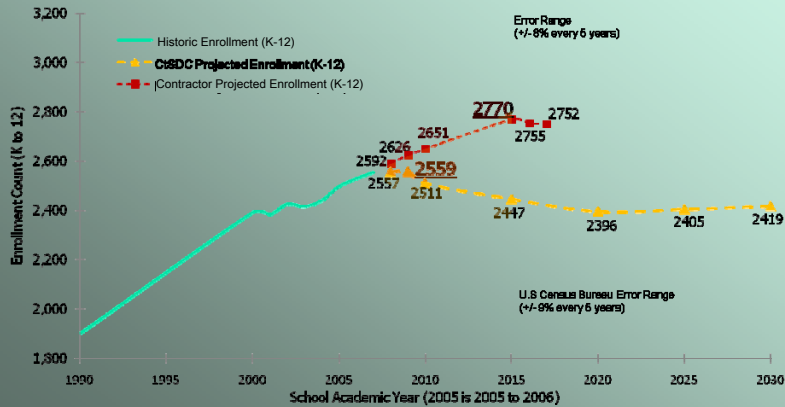
Projected K-12 Population CT Town Example 2005 to 2030

Cohort-Survival Method

- Based on **recent short-term trends** (enrollment)
- Maximum reached in 2015-2016 at 2,770 students

Cohort-Component Method (CtSDC)

- Widely Used By Expert Demographers
- Based on **long-term trends** (fertility, migration, mortality)
- Maximum reached in 2009-2010 at 2,559 students



6/16/2008

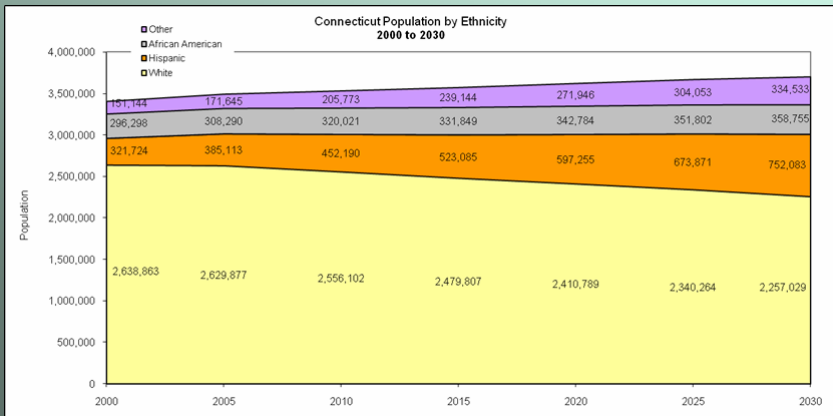
6

CT Population Projections – by Ethnicity 2005 to 2030

State	Racial Category ¹	Age Group	Census 2000							CiSDC Projected Population						
			2000	2005	2010	2015	2020	2025	2030	2000	2005	2010	2015	2020	2025	2030
State	African American	Total	296,298	308,290	320,021	331,849	342,784	351,802	358,755							
Connecticut	Hispanic	Total	321,724	385,113	452,190	523,085	597,255	673,871	752,083							
Connecticut	Other	Total	151,144	171,645	205,773	239,144	271,946	304,053	334,533							
Connecticut	White	Total	2,638,863	2,629,877	2,556,102	2,479,807	2,410,789	2,340,264	2,257,029							

Note ¹: Racial Categories are mutually exclusive. African American, Other, and White do NOT include Hispanics. In CT, Other is mostly Mainland Chinese and South Asian Indian.

Connecticut	All	Total Population	3,408,029	3,494,925	3,534,086	3,573,885	3,622,774	3,669,990	3,702,400
-------------	-----	------------------	-----------	-----------	-----------	-----------	-----------	-----------	-----------

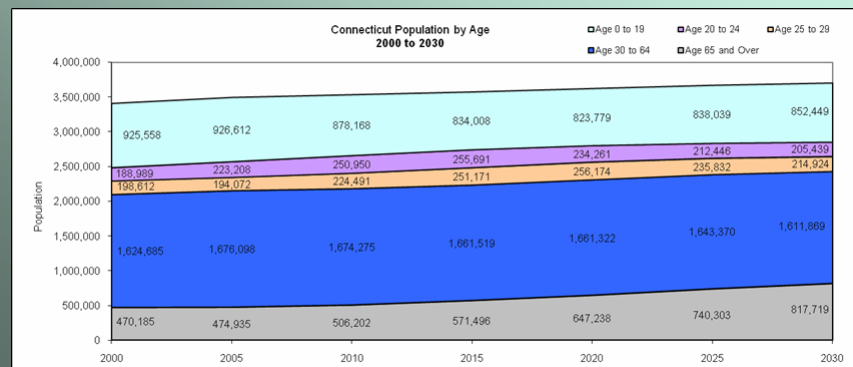


6/16/2008

7

CT Population Projections – by Age 2005 to 2030

State	Age Group	Census 2000							CiSDC Projected Population						
		2000	2005	2010	2015	2020	2025	2030	2000	2005	2010	2015	2020	2025	2030
Connecticut	Total	3,408,029	3,494,925	3,534,086	3,573,885	3,622,774	3,669,990	3,702,400							
Connecticut	0 to 19	925,558	926,612	878,168	834,008	823,779	838,039	852,449							
Connecticut	20 to 24	188,989	223,208	250,950	255,691	234,261	212,446	205,439							
Connecticut	25 to 29	198,612	194,072	224,491	251,171	256,174	235,832	214,924							
Connecticut	30 to 64	1,624,685	1,676,098	1,674,275	1,661,519	1,661,322	1,643,370	1,611,869							
Connecticut	65 and Over	470,185	474,935	506,202	571,496	647,238	740,303	817,719							



6/16/2008

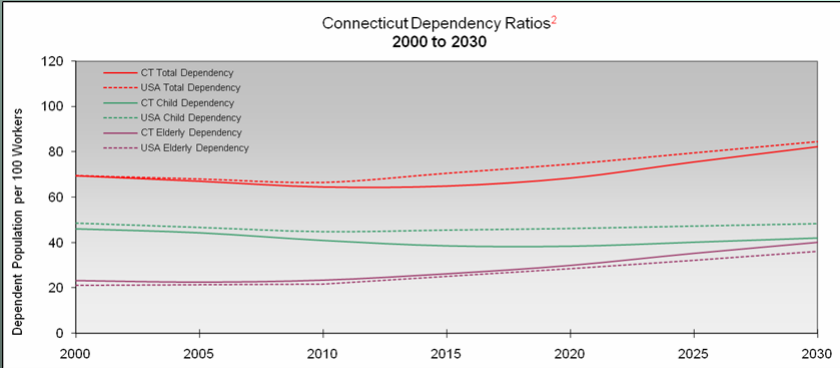
8

CT Dependency Ratios 2005 to 2030

Number of children (age 0 to 19) that are dependent on 100 workers (age 20 to 64)	Census 2000	CtSDC Projected Children per 100 Workers for specified year ²					
	46	2005	2010	2015	2020	2025	2030
		44	41	38	38	40	42

Number of elderly (age 65+) that are dependent on 100 workers (age 20 to 64)	Census 2000	CtSDC Projected Elderly per 100 Workers for specified year ²					
	23	2005	2010	2015	2020	2025	2030
		23	24	26	30	35	40

Number of children (age 0 to 19) plus elderly (age 65 and over) that are dependent on 100 workers (age 20 to 64)	Census 2000	CtSDC Projected Total Dependency per 100 Workers for specified year ²					
	69	2005	2010	2015	2020	2025	2030
		67	64	65	68	75	82



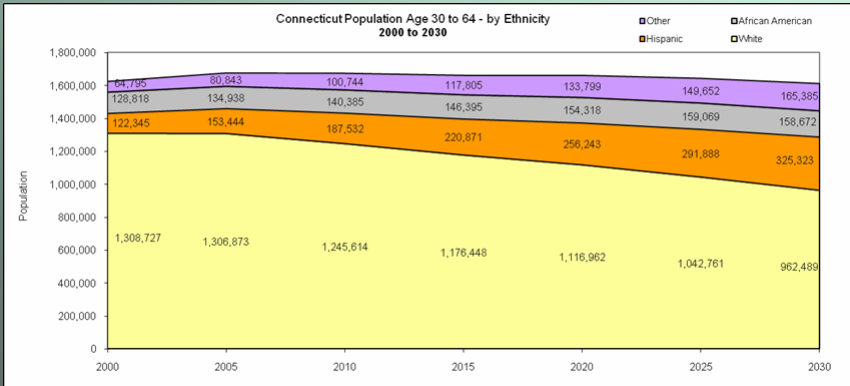
Note ²: An increasing dependency ratio indicates that there is increasing dependence on the working population.
6/16/2008 9

CT Population Projections Age 30 to 64 – by Ethnicity 2005 to 2030

State	Racial Category ¹	Age Group	Census 2000	CtSDC Projected Population					
			2000	2005	2010	2015	2020	2025	2030
Connecticut	African American	30 to 64	128,818	134,938	140,385	146,395	154,318	159,069	158,672
Connecticut	Hispanic	30 to 64	122,345	153,444	187,532	220,871	256,243	291,888	325,323
Connecticut	Other	30 to 64	64,795	80,843	100,744	117,805	133,799	149,652	165,385
State	White	30 to 64	1,308,727	1,306,873	1,245,614	1,176,448	1,116,962	1,042,761	962,489

Note ¹: Racial Categories are mutually exclusive. African American, Other, and White do NOT include Hispanics. In CT, Other is mostly Mainland Chinese and South Asian Indian.

Connecticut	All	30 to 64	1,624,685	1,676,098	1,674,275	1,661,519	1,661,322	1,643,370	1,611,869
-------------	-----	----------	-----------	-----------	-----------	-----------	-----------	-----------	-----------



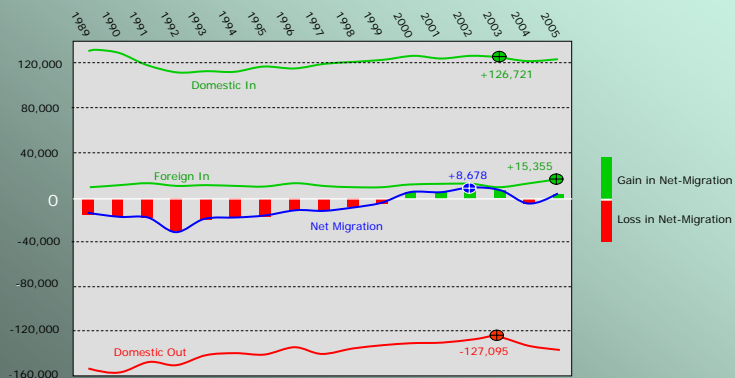
6/16/2008 10



CT Migration 1989 to 2005 Domestic and Foreign

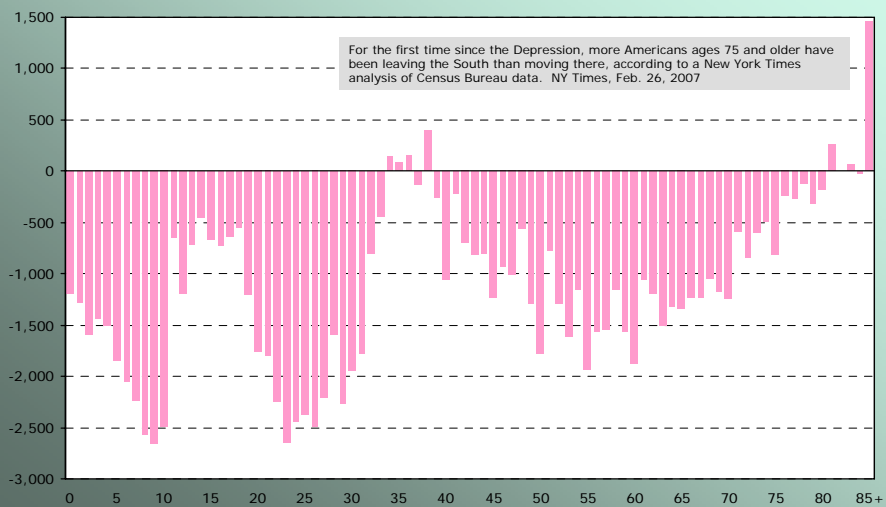
2000 to 2003 Were Atypical

- 2003: 17-year **low (fewer)** (-127,095) for domestic out-migration
- 2003: 14-year **high** (+126,721) for domestic in-migration
- 2005: 17-year **high** (+15,335) in foreign in-migration
- 2002) 17-year **high** (+8,678) in net-migration



Migration by Ethnicity, Sex, and Age 1990 to 2000 Non-Hispanic White Females

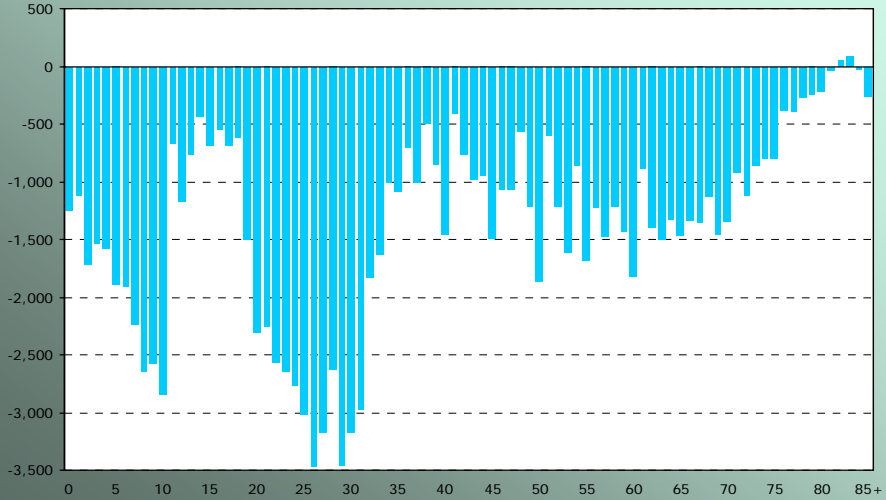
Net Migration Loss of 93,993 Over 10 Years





Migration by Ethnicity, Sex, and Age 1990 to 2000 Non-Hispanic White Males

Net Migration Loss of 115,822 Over 10 Years



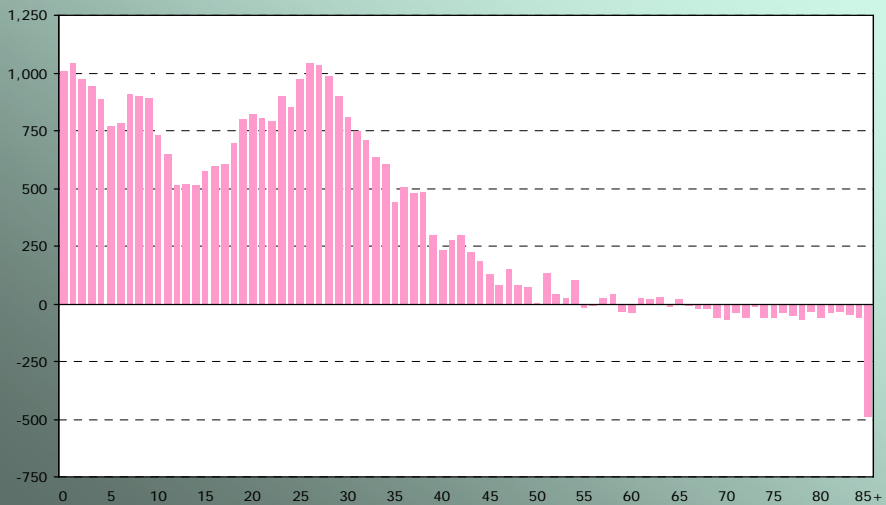
6/16/2008

13



Migration by Racial Ethnicity, Sex, and Age 1990 to 2000 Hispanic Females

Net Migration Gain of 31,310 Over 10 Years



6/16/2008

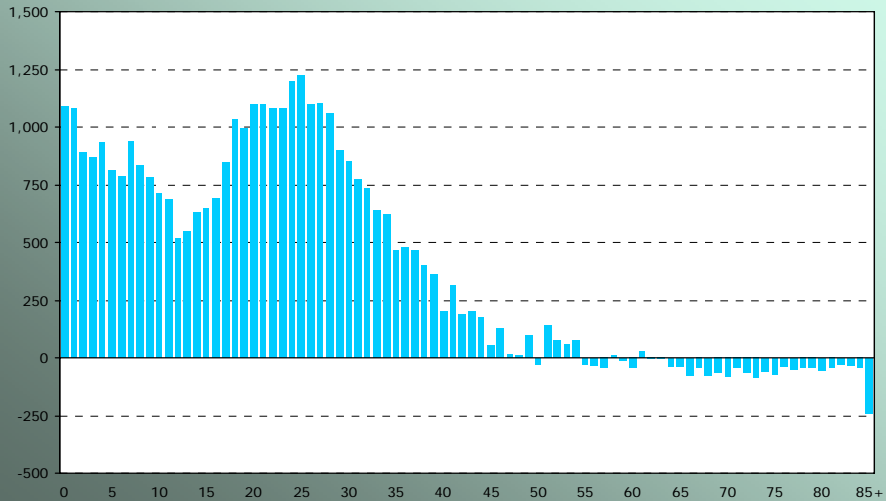
14



Migration by Ethnicity, Sex, and Age

1990 to 2000 Hispanic Males

Net Migration Gain of 33,882 Over 10 Years



6/16/2008

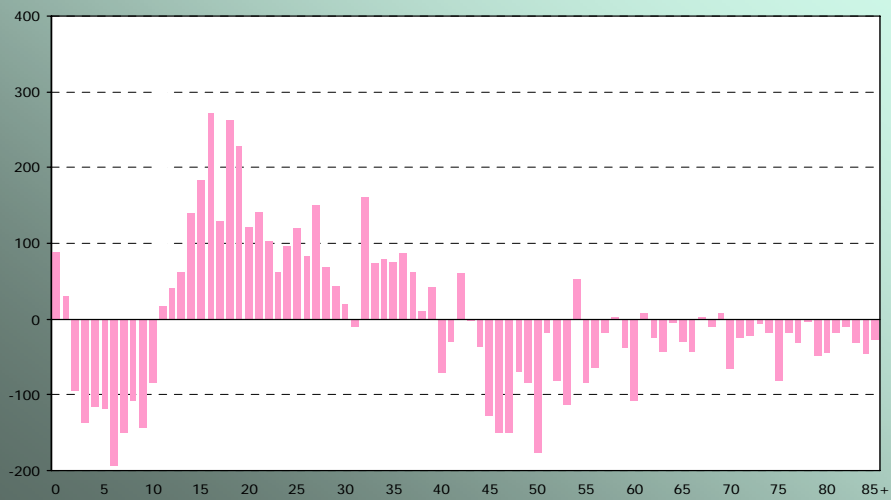
15



Migration by Ethnicity, Sex, and Age

1990 to 2000 Non-Hispanic African American Females

Net Migration Gain of 265 Over 10 Years



6/16/2008

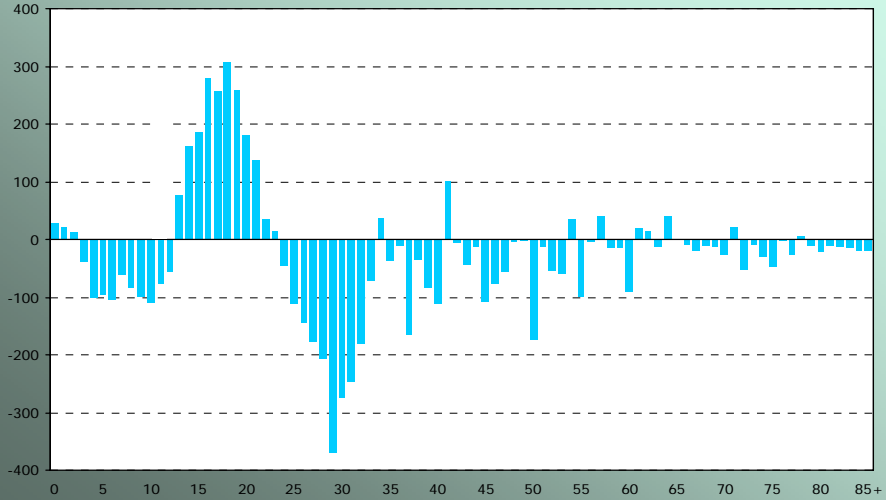
16



Migration by Ethnicity, Sex, and Age

1990 to 2000 Non-Hispanic African American Males

Net Migration Loss of 1,685 Over 10 Years



6/16/2008

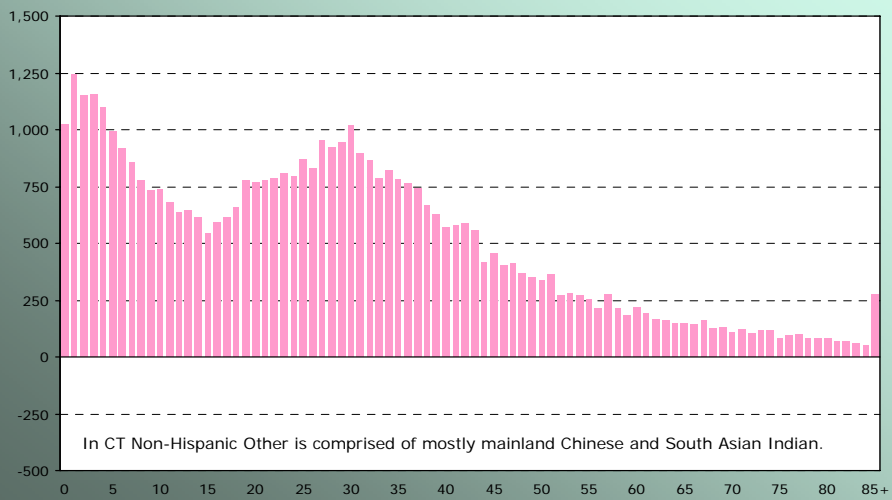
17



Migration by Ethnicity, Sex, and Age

1990 to 2000 Non-Hispanic Other Females

Net Migration Gain of 43,430 Over 10 Years



In CT Non-Hispanic Other is comprised of mostly mainland Chinese and South Asian Indian.

6/16/2008

18



Migration by Ethnicity, Sex, and Age

1990 to 2000 Non-Hispanic Other Males

Net Migration Gain of 41,487 Over 10 Years



6/16/2008

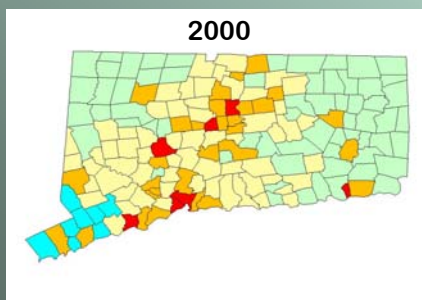
19



Ethnic and Economic Variation In Connecticut

The *Five* Connecticuts

The United States is in the midst of a major realignment of its population as the baby-boom generation ages into retirement and a smaller, strikingly different younger generation prepares to take over. – www.prb.org



- **Wealthy** - 8 Towns – 5.4% of statewide population
- **Suburban/Bedroom** - 61 Towns - 26.3% of statewide population
- **Rural** - 63 Towns – 13.4% of statewide population
- **Urban Core** - 7 Towns – 18.8% of statewide population
- **Urban Periphery** - 30 Towns – 36% of statewide population

Note: These town groupings are similar to ERGs (Education Reference Groups) used by the CT State Dept. of Education, the HRGs (Health Reference Groups) used by the CT Health Foundation, and rural town designation used by the CT State Office of Rural Health.

6/16/2008

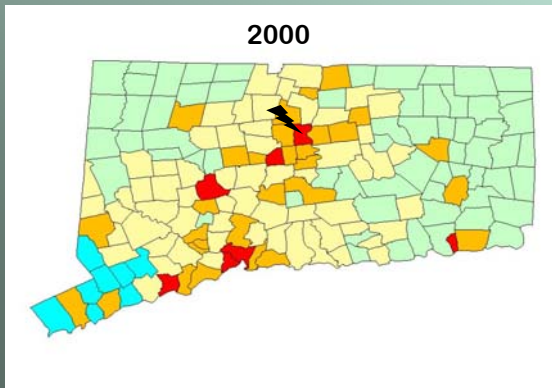
20



Ethnic and Economic Variation In Connecticut

The Urban Core - Hartford

The "black race" population is expected to increase by more than 50 percent, the "Hispanic ethnicity" population by 99 percent, and the "Asian race" population by 113 percent.
- Connecticut Health Foundation



Urban Core - 7 Towns – 18.8% of statewide population

- Youngest populations in CT
- Mostly ethnic and immigrant
- Will provide increasing percentage of workers in CT

6/16/2008

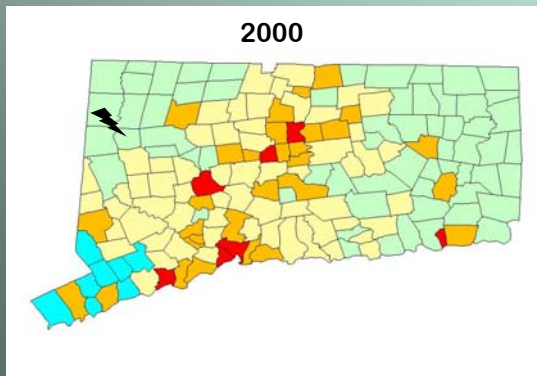
21



Ethnic and Economic Variation In Connecticut

Rural - Warren

The higher concentration of rural elderly is due to a persistent pattern of net outmigration among rural youth. In almost all settings, the propensity to migrate is highest among individuals ages 20-30, and rural-to-urban migration among young adults always outnumbers its counterstream. – USDA Economic Research Service



Rural - 63 Towns – 13.4% of statewide population

- Oldest populations in CT
- Mostly White/Caucasian

6/16/2008

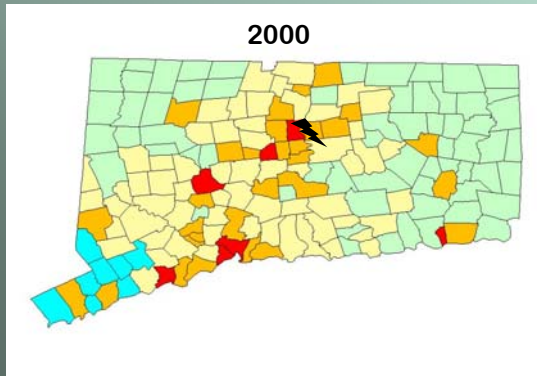
22



Ethnic and Economic Variation In Connecticut

Suburban/Bedroom - Glastonbury

Glastonbury is a suburb, founded in 1693, with approximately twenty-nine thousand people. The area of the town is about 52.5 square miles. The community is mostly residential with some business and retail. Two major retail shopping areas are just a short drive from Glastonbury. – www.glastonbury.com



Suburban/Bedroom - 61 Towns -
26.3% of statewide population

- Upper-Middle Class
- Mostly White/Caucasian
- Future population growth limited by decreasing number of upper-income employment opportunities in CT

6/16/2008

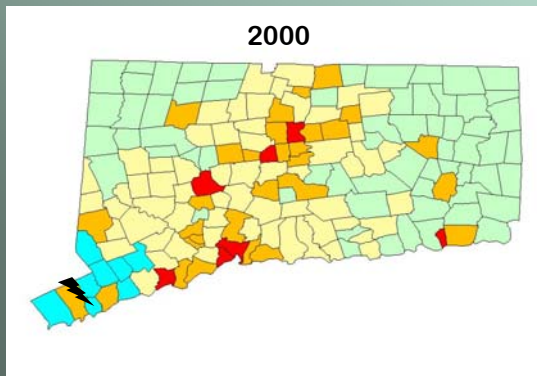
23



Ethnic and Economic Variation In Connecticut

Wealthy - Darien

Although the panhandle of southwestern Connecticut continues to develop as a series of bedroom communities for Manhattan executives, the towns have never lost their country like charm. Darien is one such village that offers hours of pleasant cycling with minimal traffic hassles. Things to See: Darien Historical Society, Washington Marker, Pear Tree Point Beach, Webb House, Rings End Landing, Stephen Mather Homestead. – www.trails.com



Wealthy - 8 Towns – 5.4% of
statewide population

- Manhattan executives
- Mostly White/Caucasians
- Future population growth limited by high cost-of-living; availability of housing; and NYC economy

6/16/2008

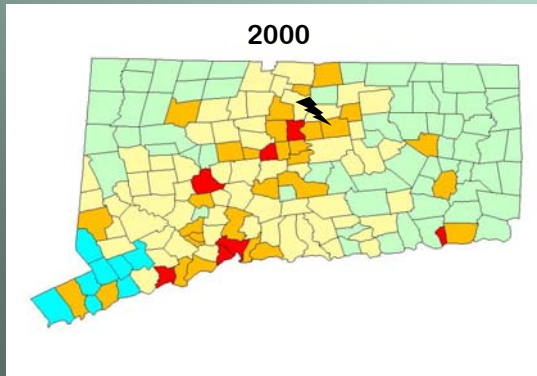
24



Ethnic and Economic Variation In Connecticut

Urban Periphery - Manchester

The emergence of more mixed-race communities, especially those with growing Hispanic and Asian populations, calls out for examining how policy might foster racial and ethnic integration, and encourage positive social outcomes in an increasingly diverse society.
– Center on Urban and Metropolitan Policy



Urban Periphery - 30 Towns –
36% of statewide population

- Largest Population of the Five Connecticut
- Most similar to statewide averages
- Most ethnically mixed population in CT

6/16/2008

25



Summary

- ✓ CT's urban centers will be composed of mostly younger ethnic minority populations.
- ✓ CT's rural areas will be composed of mostly older White/Caucasian populations.
- ✓ Statewide net loss of approximately 75,000 (8%) in 0-19 population from 2005 to 2030.
- ✓ From Oct. 2005 to Oct. 2006, 95 public school districts (49%) either dropped in enrollment or remained unchanged.
- ✓ From Oct. 2005 to Oct. 2006, statewide public school enrollment grew by only 633 (0.11%, 0.0011).
- ✓ From Oct. 2006 to Oct. 2007, 131 public school districts (67%) either dropped in enrollment or remained unchanged (preliminary data).
- ✓ From Oct. 2006 to Oct. 2007, preliminary enrollment data show statewide public school enrollment dropped by 4,000 (0.7%, 0.0070).
- ✓ Net gain of 6% in K-12 population in urban core and urban periphery from 2000 to 2030.
- ✓ Statewide number of residents 65+ will increase by nearly 75% from 2000 to 2030.
- ✓ Statewide loss of over 60,000 (3%) members in the workforce from 2005 to 2030.
- ✓ Only foreign (non-Hispanic) in-migration is keeping Connecticut from falling into negative population growth.
- ✓ Rhode Island has had negative population growth for the past three years (2005, 2006, 2007).

6/16/2008

26